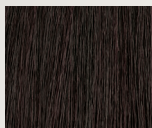
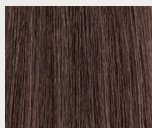




# DIMENSIONAL DARK CHOCOLATE



4Ch/4.9



6Ch/6.9

## FORMULA

### Formula A:

Color Calypso Demi-Permanent Gloss 4Ch/4.9  
= 6Ch/6.9 + Color Calypso Gloss Activator;  
mixing ratio 1:1

### Formula B:

Color Calypso Demi-Permanent Gloss 6Ch/6.9  
+ Color Calypso Gloss Activator; mixing ratio 1:1

---

## APPLICATION

**Darkening:** On clean, damp hair, apply Formula A to the root area using horizontal sections. Starting in the nape and working up, apply Formula A from the mid-length to ends on alternating sections to create dimension, working in a bricklay pattern. Process for up to 20 minutes. Rinse.

**Global Glossing:** Apply Formula B globally. Process for up to 20 minutes. Follow with Color Care Shampoo and Conditioner.

BEFORE

