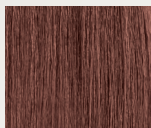




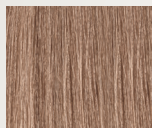
SIENNA CHOCOLATE



9Ch/9.9



7Ch/7.9



8Ch/8.9

FORMULA

Formula A:

Color Rhapsody Permanent Cream Color 9Ch/9.9
+ Oxidative Cream Developer 30 vol.; mixing ratio 1:1

Formula B:

Color Rhapsody Permanent Cream Color 7Ch/7.9
+ Oxidative Cream Developer 20 vol.; mixing ratio 1:1

Formula C:

Blonde Voyage Powder Lightener + Oxidative
Cream Developer 5 vol.; mixing ratio 1:1.5 to 1:2

Formula D:

Color Calypso Demi-Permanent Gloss 7Ch/7.9
= 8Ch/8.9 + Color Calypso Gloss Activator;
mixing ratio 1:1

APPLICATION

First-Time Color: Step 1: Apply Formula A to untreated hair, ½-inch from the scalp to the ends, working in a bricklay pattern. Step 2: While leaving Formula A on the hair, apply Formula B to the root area. Process for 30 minutes. Rinse. Follow with Color Care Shampoo and Conditioner.

Lightener: On dry hair, take an ear-to-ear radial parting, dividing the front from the back, then subdivide the front section using a center part. In the front section, apply Formula C to pivoting micro-slices. Lighten to a medium blonde (level 7). Rinse. Follow with Color Care Shampoo and Conditioner.

Global Glossing: Apply Formula D globally. Process for up to 20 minutes. Rinse. Follow with Color Care Conditioner.

BEFORE

