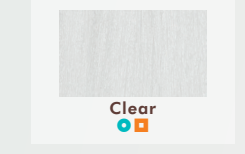


MOROCCANOIL

COLOR RHAPSODY AND COLOR CALYPSO

	GREY		GREEN	BLUE				VIOLET			NATURAL			CHOCOLATE			YELLOW		ORANGE			RED		RED-VIOLET
	.8/Gy	.82/GyV	.7/Gr	.1/B	.12/BV	.13/BG	.17/BGr	.2/V	.21/VB	.24/VC	.0/N	.00/NN	.9/Ch	.91/ChB	.99/ChCh	.3/G	.34/GC	.4/C	.43/CG	.46/CR	.6/R	.64/RC	.65/RRv	.5/Rv
10	10.8/10Gy	10.82/10GyV		10.1/10B	10.12/10BV	10.13/10BG		10.2/10V	10.21/10VB	10.24/10VC	10.0/10N					10.3/10G								
9	9.8/9Gy	9.82/9GyV		9.1/9B		9.13/9BG		9.2/9V	9.21/9VB		9.0/9N		9.9/9Ch	9.91/9ChB		9.3/9G	9.34/9GC							
8	8.8/8Gy	8.82/8GyV		8.1/8B	8.12/8BV			8.2/8V	8.21/8VB	8.24/8VC	8.0/8N	8.00/8NN	8.9/8Ch			8.3/8G		8.4/8C	8.43/8CG		8.6/8R			
7			7.7/7Gr			7.13/7BG			7.21/7VB		7.0/7N	7.00/7NN	7.9/7Ch			7.3/7G	7.34/7GC	7.4/7C		7.46/7CR	7.6/7R			
6	6.8/6Gy	6.82/6GyV	6.7/6Gr	6.1/6B	6.12/6BV	6.13/6BG	6.17/6BGr	6.2/6V			6.0/6N	6.00/6NN	6.9/6Ch			6.3/6G		6.4/6C	6.43/6CG		6.6/6R			
5			5.7/5Gr			5.13/5BG					5.0/5N	5.00/5NN		5.9/5ChCh		5.3/5G	5.34/5GC	5.4/5C		5.46/5CR	5.6/5R			
4				4.1/4B				4.2/4V			4.0/4N	4.00/4NN	4.9/4Ch			4.3/4G		4.4/4C		4.6/4R	4.64/4RC	4.65/4RRv	4.5/4Rv	
3											3.0/3N													
2				2.1/2B							2.0/2N													

Color Rhapsody Permanent Cream Color Color Calypso Demi-Permanent Gloss



COLOR RHAPSODY ULTIMATES

	BLUE	NATURAL	CHOCOLATE	YELLOW		RED
	.01/NB	.00/NN	.09/NCh	.03/NG	.034/NGC	.06/NR
10						
9		9.00/9NN			9.034/9NGC	
8	8.01/8NB	8.00/8NN	8.09/8NCh	8.03/8NG		
7		7.00/7NN			7.034/7NGC	7.06/7NR
6	6.01/6NB	6.00/6NN	6.09/6NCh	6.03/6NG		
5		5.00/5NN			5.034/5NGC	5.06/5NR
4	4.01/4NB	4.00/4NN	4.09/4NCh	4.03/4NG		

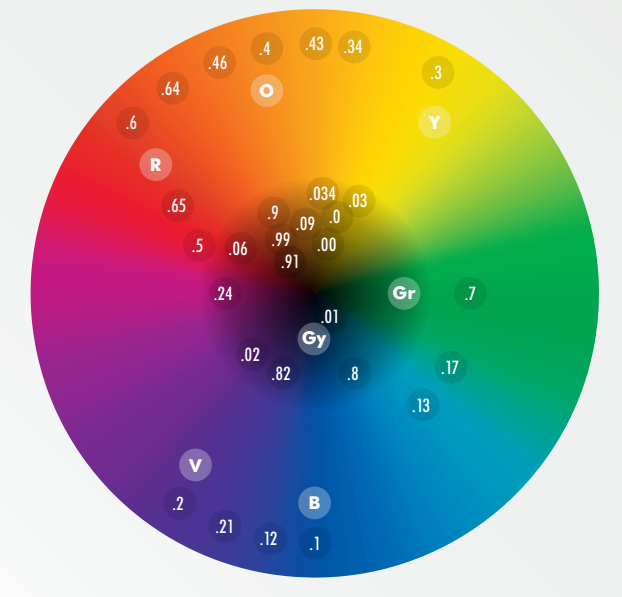
COLOR RHAPSODY HIGH LIFT

HL.0/N	HL.1/B	HL.2/V	HL.3/G	HL.4/Gy
--------	--------	--------	--------	---------

COLOR INFUSION

GREY MIXER	GREEN MIXER	BLUE MIXER	VIOLET MIXER	YELLOW MIXER	ORANGE MIXER	RED MIXER
------------	-------------	------------	--------------	--------------	--------------	-----------

COLOR THEORY



LEVEL	UNDERLYING PIGMENT	COMPLEMENTARY TONE
10	LIGHTEST PALE YELLOW	LIGHTEST VIOLET
9	VERY PALE YELLOW	VERY LIGHT VIOLET
8	YELLOW	VIOLET-BLUE
7	YELLOW-ORANGE	BLUE-VIOLET
6	ORANGE-YELLOW	BLUE
5	ORANGE	BLUE-GREEN
4	ORANGE-RED	GREEN-BLUE
3	RED-ORANGE	GREEN
2	RED	

TONAL NAMES + NUMBERS										
.00/NN	.0/N	.1/B	.2/V	.3/G	.4/C	.5/Rv	.6/R	.7/Gr	.8/Gy	.9/Ch
NATURAL	NATURAL	BLUE	VIOLET	YELLOW	ORANGE	RED-VIOLET	RED	GREEN	GREY	BROWN
Intense Natural	Natural	Ash	Iridescent	Gold	Copper	Mahogany	Red	Matte	Grey	Chocolate

WARNING/CAUTION: Hair colorants can cause severe allergic reactions. These products are not intended for use on persons under the age of 16. Temporary "black henna" tattoos may increase your risk of allergy. Wear suitable gloves during application. Avoid contact with eyes. Rinse eyes immediately if product comes into contact with them. If any adverse reaction occurs, immediately stop using the product and seek medical assistance. Do not color your hair if you have a rash on your face or a sensitive, irritated, or damaged scalp; you have ever experienced any reaction after coloring your hair; you have experienced a reaction to a temporary "black henna" tattoo in the past. The preparation may cause serious skin inflammation in some people, and a preliminary test should always be performed 48 hours prior to each application to determine whether or not a special sensitivity exists.

PREPARATION OF MIXTURE APPLICATION

Mix 1 part Color Rhapsody with 1 part Oxidative Cream Developer 5 vol. (1.5%), 10 vol. (3%), 20 vol. (6%), 30 vol. (9%), or 40 vol. (12%) in a non-metallic bowl. Use immediately after mixing.

1:1

WHITE/GREY HAIR COVERAGE	1 PART N/O	2 PARTS DESIRED SHADE
25-50% WHITE HAIR	1 PART N/O	2 PARTS DESIRED SHADE
50-100% WHITE HAIR	1 PART N/O	1 PART DESIRED SHADE
RED SHADES ABOVE 50%	1 PART N/O	2 PARTS DESIRED RED SHADE

Mix 1 part Color Rhapsody Ultimates Permanent Cream Color with 1 part Oxidative Cream Developer 10 vol. (3%), 20 vol. (6%), 30 vol. (9%), or 40 vol. (12%) in a non-metallic bowl. Use immediately after mixing.

1:1

WHITE/GREY HAIR COVERAGE	DESIRED PRE-MIXED ULTIMATES SHADE
50-100% RESISTANT WHITE HAIR	DESIRED PRE-MIXED ULTIMATES SHADE

Mix 1 part Color Rhapsody High Lift with 2 parts Oxidative Cream Developer 30 vol. (9%) or 40 vol. (12%) in a non-metallic bowl. Use immediately after mixing.

1:2

Mix 1 part Color Calypso Glass with 1 part Glass Activator in a non-metallic bowl or applicator bottle. Use immediately after mixing.

1:1

WHITE/GREY HAIR BLENDING	1 PART N/O	2 PARTS DESIRED SHADE
For a blended effect, add a natural shade into chosen formula.	1 PART N/O	2 PARTS DESIRED SHADE
25-50% WHITE HAIR	1 PART N/O	2 PARTS DESIRED SHADE
50-100% WHITE HAIR	1 PART N/O	1 PART DESIRED SHADE

Mix with Oxidative Cream Developer 5 vol. (1.5%), 10 vol. (3%), 15 vol. (4.5%), 20 vol. (6%), 30 vol. (9%), or 40 vol. (12%) in a ratio of 1:1.5 up to 1:2 in a non-metallic bowl.

1:1.5 - 1:2

PREPARATION OF MIXTURE APPLICATION

Mix with Oxidative Cream Developer 5 vol. (1.5%), 10 vol. (3%), 15 vol. (4.5%), 20 vol. (6%), 30 vol. (9%), or 40 vol. (12%) in a ratio of 1:1.5 for maximum adhesion in a non-metallic bowl.

1:1.5

Mix with Oxidative Cream Developer 5 vol. (1.5%), 10 vol. (3%), 15 vol. (4.5%), 20 vol. (6%), 30 vol. (9%), or 40 vol. (12%) in a ratio of 1:1.5 in a non-metallic bowl.

1:1.5

Color Infusion Pure Color Mixer can be mixed with Color Rhapsody or Color Calypso. The lighter the shade, the less mixer is needed. Follow the chart below, which indicates the recommended amount of Color Infusion for the level of the base haircolor shade.

NOTE: Mixing recommendations are for guidance only; adjust amounts and/or mix ratios to intensify or soften the final results.

Apply on dry hair. Follow development guidelines of the chosen Color Rhapsody or Color Calypso line based on desired result and hair porosity.

PRE-PIGMENTATION
Lightening the hair removes its natural pigments. To avoid green or fast-fading results when recoloring lightened hair back to a darker shade, reintroduce the warm underlying tones by pre-pigmenting with Color Infusion Yellow or Orange, before applying the desired Color Rhapsody or Color Calypso shade.

NOTE: To avoid overly dark final results, formulate the Color Calypso or Color Rhapsody target shade 1-2 levels lighter.

FORMULATION RECOMMENDATIONS
Blend different Color Infusion Pure Color Mixers to create unique shades, such as:
Blue + Grey = brushed platinum
Red + Yellow = rose gold
Mix Color Infusion with CLEAR to create pure pastel tones, ideal for:
Color correction, pre-toning, pastel effects, enhancing white/grey

NOTE: Always perform a strand test before application.

COLOR CARE SHAMPOO & CONDITIONER
Protect against environmental aggressors to extend the life of haircolor. ArganID® helps seal the cuticle to lock in color and enhance vibrancy.

BLONDE PERFECTING PURPLE SHAMPOO & CONDITIONER
Professional-strength formulas neutralize brassiness in blonde, lightened, and grey hair.

